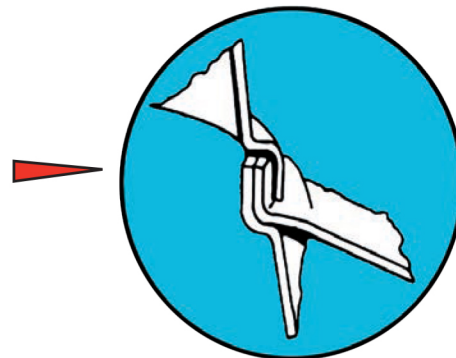


## OUR RAIN SHIELD WILL NOT LEAK

Our 175 pound (79.5 kg) capacity game bird feeder solves the persistent problem of keeping rain out of the feed trough. The rain shield interlocks with the body. The seamless upper shell of the body steps out over the rain shield such that rain would have to climb vertically for any leakage to occur.

Our Model GBF175 game bird feeder is molded from polyethylene. Potent ultraviolet protection is added to maximize the life of your investment. We surveyed some of our game bird raising customers and reviewed their comments carefully when we designed these features...



Body has a fall away taper to facilitate feed flow.

8 inch (20.3 cm) rain shield can be adjusted for height.

**A quail pan is available.  
Order Model GBF175Q**



Cover fingerhold for easy removal.

3.5 inch (8.9 cm) vertical surface helps cover stay in place in strong winds.

Adjustable feet slide can be set for feeds of varying flowability.

Pan has a 6 inch (15.2 cm) cone in the bottom to provide good cleanout.



Add capacity with GBF1520 Poly Extension. Add-on shell fits over the rain shield. The top poly shell fits over add-on shell. The shell adds about 17 inches (43.2 cm) of height and about 130 pounds (59.1 kg) of feed capacity depending upon the feed being used. Total capacity with extension is about 305 pounds (138.6 kg).

### GAME BIRD FEEDER SPECIFICATIONS

Model No.	Description	Approx. Feed Capacity	Approx. Bird Capacity	Overall Size	Shipping Wt.	
					Pack <sup>2</sup>	Lbs. (kg)
GBF175 GBF175Q	Game Bird Feeder Quail Feeder	175 lbs. (79.5 kg)	125 Pheasant 200 Quail	37" Dia x 36" to 40" H (90.0 cm x 91.4 to 101.6 cm)	2	73 (33.2) Per 2 Pack
GBF1520	Game Bird Feeder Extension, Poly	130 lbs. (59.1 kg)		20 3/8" Dia. x 17" H (51.8.x 43.2 cm)	1	13 (5.9)

\*Height varies according to where rain shield is set. <sup>2</sup>Standard pack is 2; single pack and bulk pack also available. See price list.

Game Bird Feeder Pan - 29" Diameter; Top of Lip is 3 7/8" High

Quail Pan - 26 5/8" Diameter; Top of Lip is 2 1/4" High

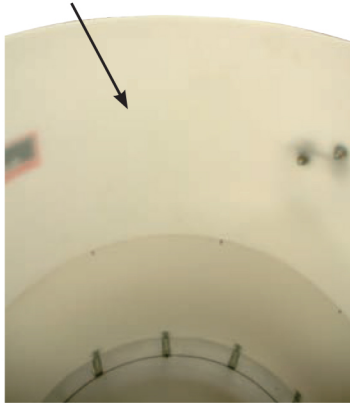
**USA Patent Numbers  
D398,424 and 6,269,769**

# JUMBO ANIMAL AND BIRD FEEDER

**No Interior Ledges or Gaps to Catch and Retain Stale Feed**  
**148 Inches of Trough Space Sufficient For Up To 250 Birds or 100 Pigs**

Rain shield is molded into the upper body assuring water tightness. No caulking is needed. Animals cannot roost or stand on our rain shield.

There is a natural taper to facilitate feed flow. There are no ledges or gaps to catch and retain stale feed.



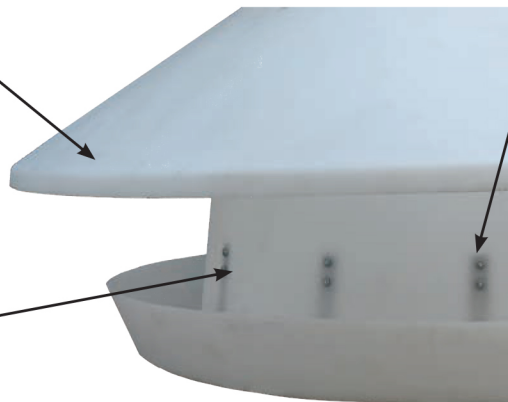
Cone shaped cover prevents roosting.

Feed level can be readily determined through translucent side wall material.

Heavy duty polyethylene material with ultraviolet protection. Wall thickness is at least .2 inch which is up to 3 times the thickness of competing feeders in critical areas.

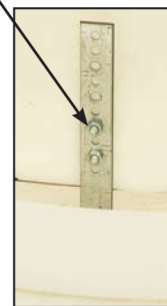
Trough circumference - 148 inches (375.9 cm) of eating space.

Rain shield extends beyond the trough 6 inches (15.2 cm). Height of the rain shield above trough is about 11 inches (28 cm).



Pen has a 13 inch (33 cm) cone in the bottom to provide good cleanout.

Body attaches to the trough with 12 galvanized steel 13 gauge legs. Each leg has 10 holes with 1/2 inch (1.3 cm) spacing allowing an adjustable feed opening.



Heavy duty cover handle and latch.

## ANIMAL AND BIRD FEEDER SPECIFICATIONS

Model No.	Description	Approx. Feed Capacity	Approx. Capacity <sup>1</sup>	Diameter - Inches (cm)			Height - Inches (cm)			Shipping Weight Lbs. (Kg) <sup>3</sup>
				Overall Including Rain Shield	Top Opening	Trough	Overall <sup>2</sup>	Fill Height <sup>2</sup>	Trough	
JABF800	Jumbo Animal & Bird Feeder	28,000 Cu. In. 650-800 lbs.	240-250 Pheasants 100 Pigs	59 (149.9)	24 (61.0)	46 (116.8)	57-60 (144.8-152.4)	44-47 (111.8-119.4)	5 (12.7)	75 (34.1)

<sup>1</sup> Based on .6 of bird per inch of trough circumference.

<sup>2</sup> Height varies according to where leg holes are bolted.

<sup>3</sup> Feeder will nest 3 to a pallet. 75 lbs. (34.1 Kg) each. Does not include weight of pallet.